

UTN

**NATIONAL TECHNOLOGICAL UNIVERSITY,
PARANÁ REGIONAL SCHOOL
CIVIL ENGINEERING DEPARTMENT, INGLÉS II**

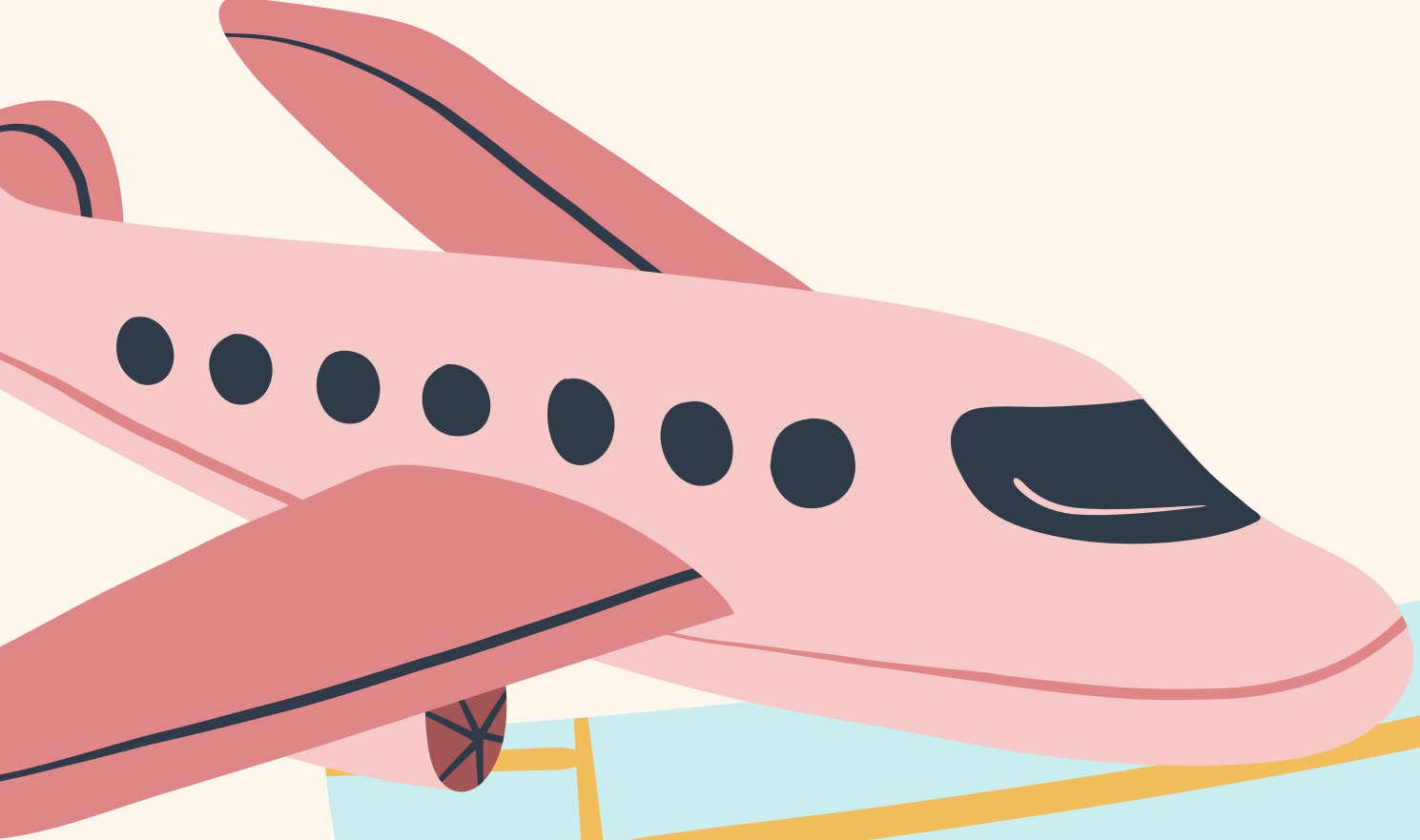
2023

INEFFECTIVE WASTE MANAGEMENT IN CIVIL WORKS IN ARGENTINA: GLOBAL PERSPECTIVES ON EFFECTIVE WASTE DISPOSAL REGULATION

This work is an EFL engineering student project. The pictures and content in this presentation are only used for educational purposes. If there is any copyright conflict, they will be immediately removed.

Students: **DELFINA BERTOSSI AND MATÍAS GASTALDI**

Teacher: **GRACIELA ELIZABETH YUGDAR TÓFALO**



LET'S EXPLORE
CDW IN THE
WORLD!



INTRODUCTION

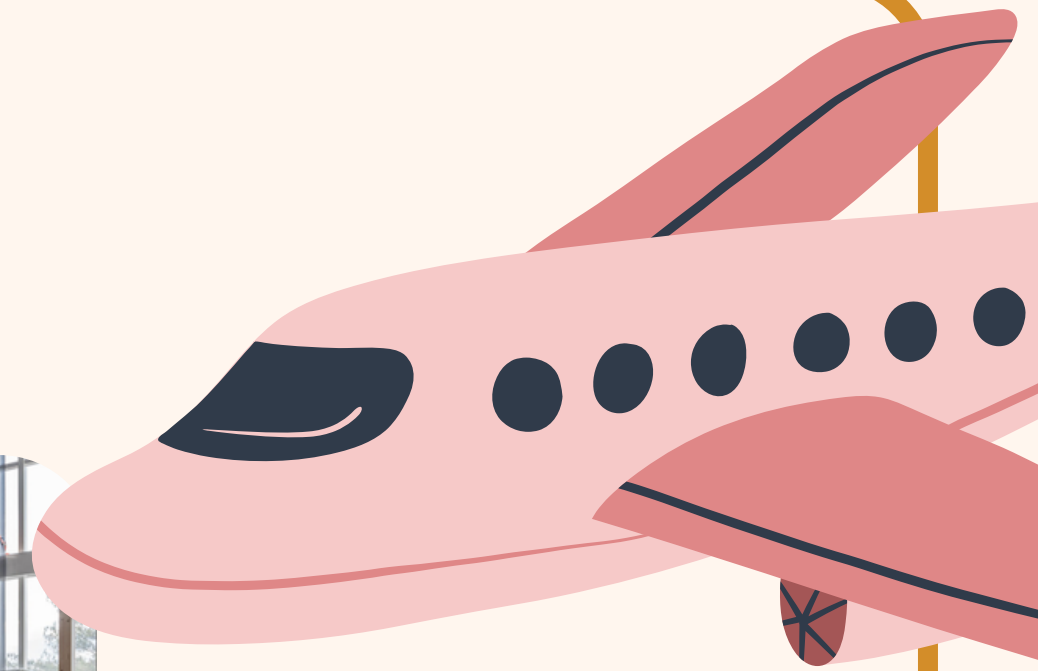


INTRODUCTION

ADVANCES IN TECHNOLOGY



CONSTRUCTION AND DEMOLITION WASTE



NEGATIVE IMPACT ON THE ENVIRONMENT



INADEQUATE WASTE MANAGEMENT





AIM OF THE PROJECT



Investigate the disposal of CDW in developed countries

Raise awareness about the pollution generated by CDW.



THESIS STATEMENT



Argentina needs to adopt sustainable measures for the recycling or proper disposal of construction and demolition waste

CONSTRUCTION AND DEMOLITION WASTE

CONSTRUCTION



RENOVATION



REPAIR



DEMOLITION



13 CLIMATE ACTION



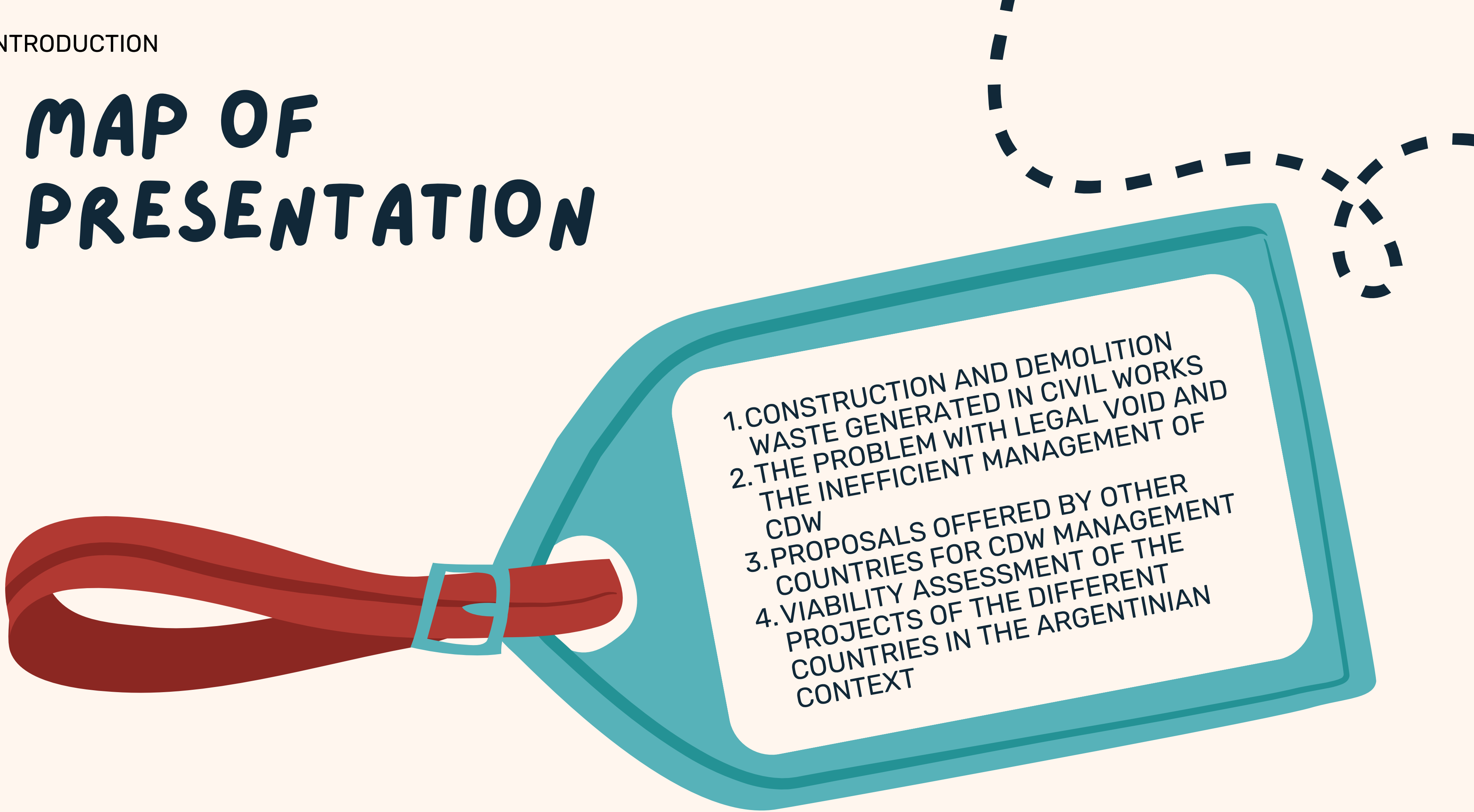
11 SUSTAINABLE CITIES AND COMMUNITIES



**SUSTAINABLE
DEVELOPMENT
GOALS**



MAP OF PRESENTATION

- 
1. CONSTRUCTION AND DEMOLITION WASTE GENERATED IN CIVIL WORKS
 2. THE PROBLEM WITH LEGAL VOID AND THE INEFFICIENT MANAGEMENT OF CDW
 3. PROPOSALS OFFERED BY OTHER COUNTRIES FOR CDW MANAGEMENT
 4. VIABILITY ASSESSMENT OF THE PROJECTS OF THE DIFFERENT COUNTRIES IN THE ARGENTINIAN CONTEXT

IMPACT WE WANT TO GENERATE

THIS UNDERTAKING IS EXPECTED TO ENHANCE PUBLIC
UNDERSTANDING OF THE ENVIRONMENTAL POLLUTION
CAUSED BY CDW DISPOSAL.

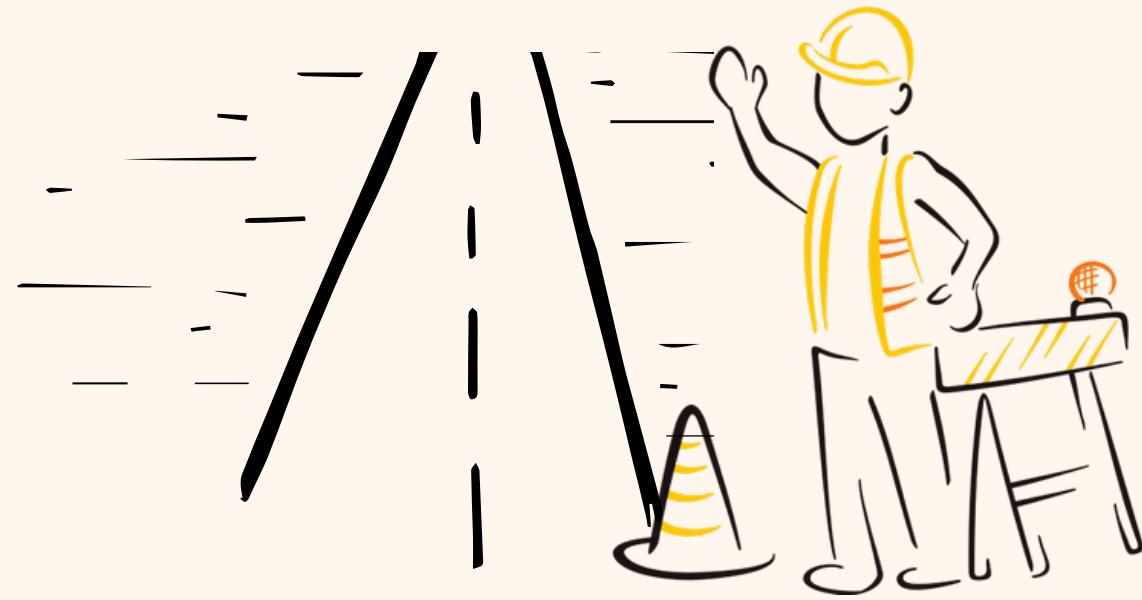


CDW GENERATED IN CIVIL WORKS

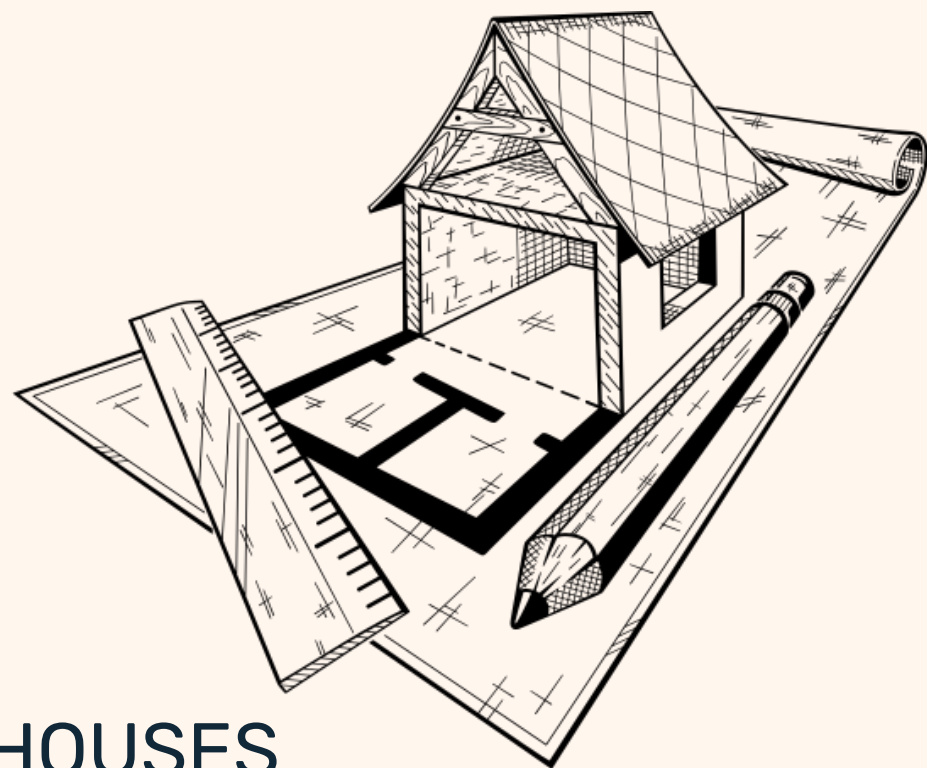
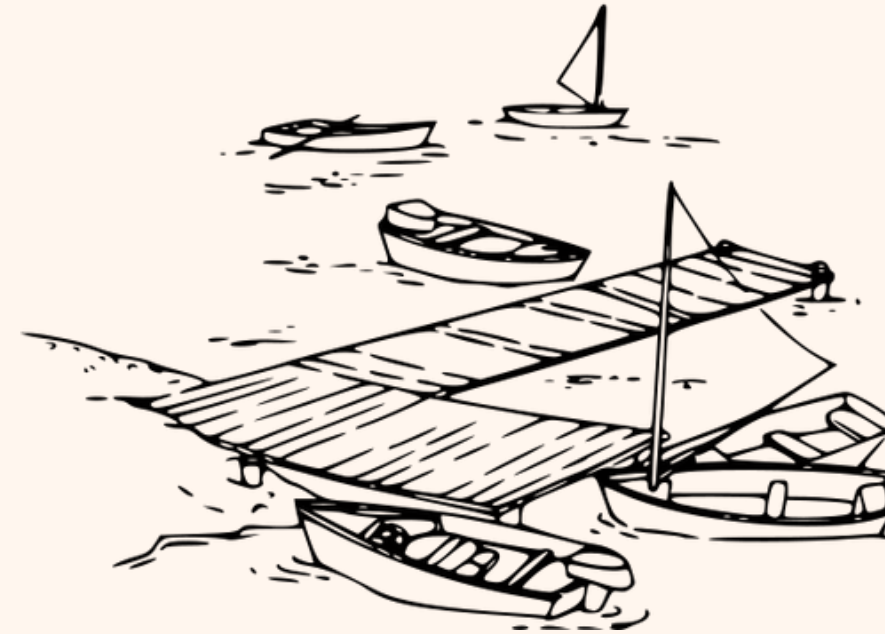


CONSTRUCTION AND DEMOLITION WASTE

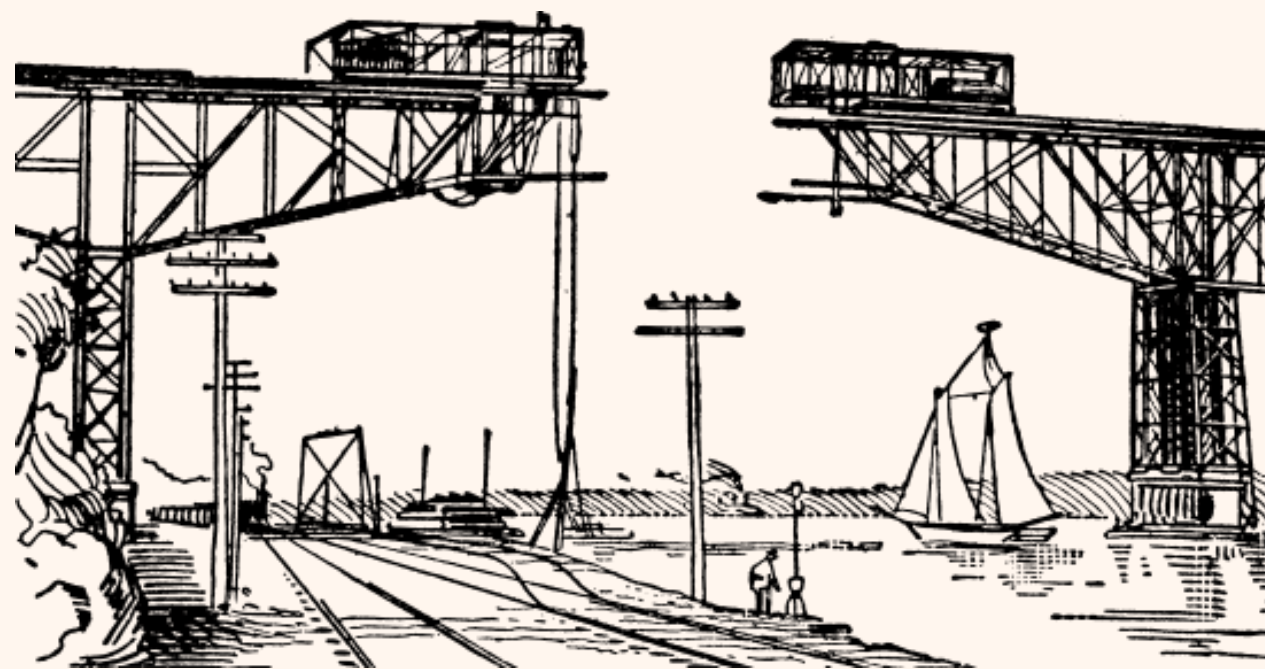
ROADS



PIERS



HOUSES



BRIDGES



DAMS

DUMP WASTE IN ARGENTINA



CLASSIFICATION

TYPE OF WASTE	LEGAL CLASSIFICATION IN CONNECTICUT	EXAMPLE
Landclearing debris	Bulky waste	Tree stumps, tree tops
Demolition waste (from buildings)	Bulky waste	Concrete, wood, brick, plaster, roofing materials, wallboard, metals, carpeting, insulation
Construction waste (from buildings)	Municipal solid waste	Pallets, wood scraps, wallboard, siding and roofing scraps, packaging, carpeting. Foam padding, insulation
Highway construction and demolition waste	Bulky waste, municipal solid waste	Asphalt, concrete, steel, related construction and demolition wastes, utility poles, railroad ties, brick, block, rock
Oversized MSW	Municipal solid waste	Furniture, furnishings, carpeting, rugs

CLASSIFICATION II

ACCORDING TO ITS
ORIGIN AND SOURCE
OF GENERATION

ACCORDING TO ITS
NATURE

Landclearing materials

Inert waste

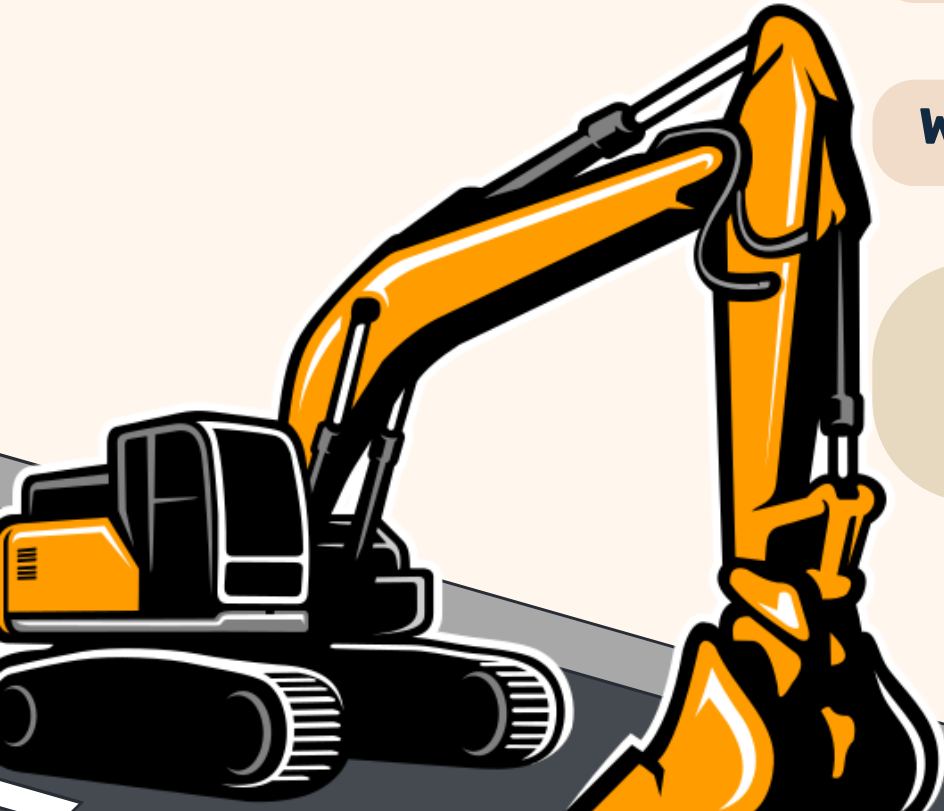
Excavation materials

**Non - hazardous
waste**

Waste from roadworks

**Waste from
construction,
expansion or repair**

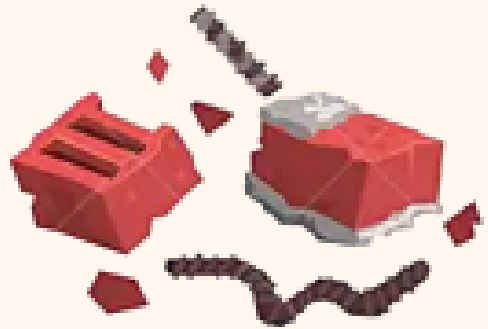
Special waste



LEGAL



VOID



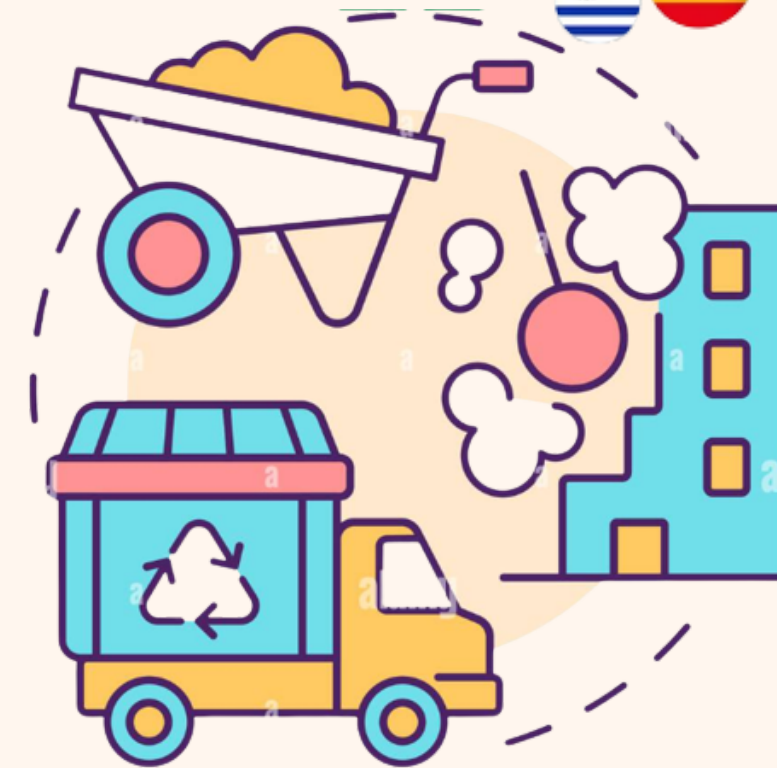
CONSTRUCTION WASTE



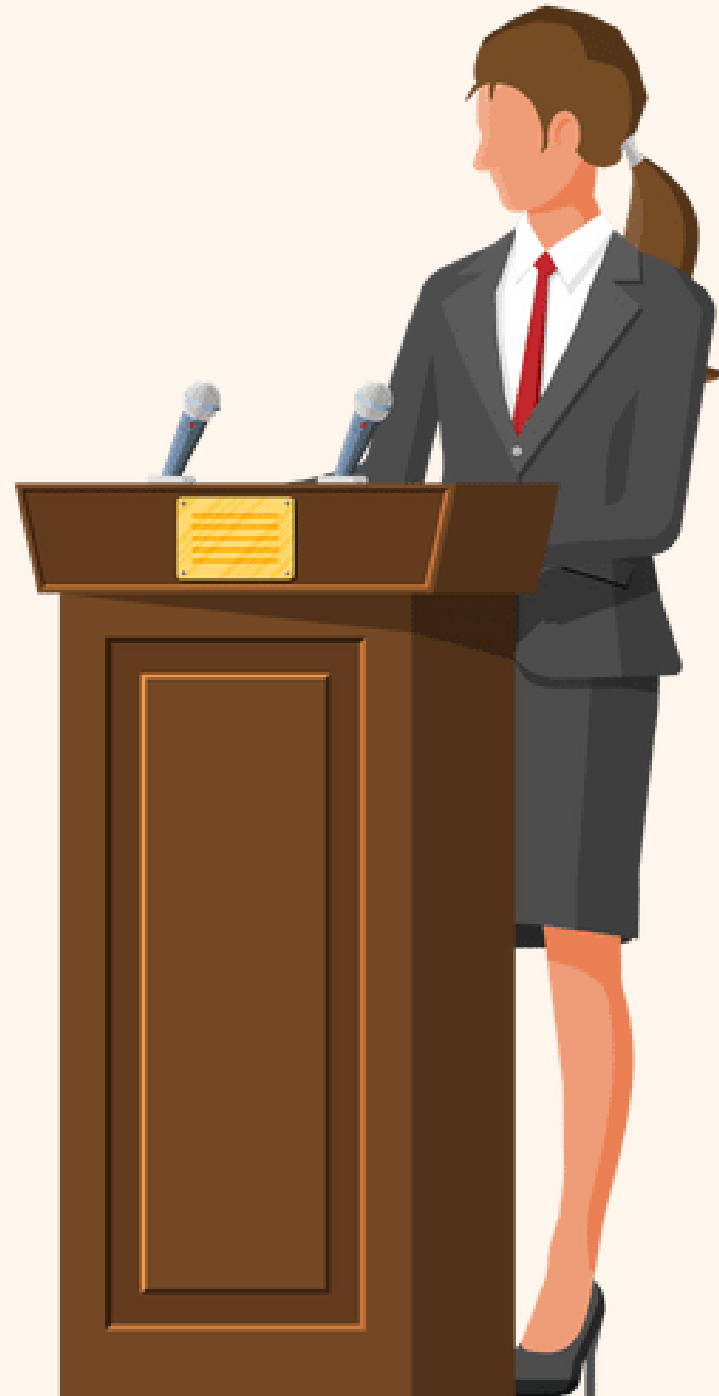
METAL



WOOD WASTE



CDW POLICIES AROUND THE WORLD




THE ITINERARY





CHINA



China has established a comprehensive set of policies and regulations to promote construction and demolition waste management.

THE UNITED STATES

The United States has state - level policies and regulations for construction and demolition waste management, but implementation is challenging due to lack of resources and public awareness.

EUROPEAN UNION

The European Union has established a comprehensive waste management framework for construction and demolition waste, prioritizing prevention, reuse and recycling.



GERMANY

The management of construction and demolition waste is governed by the Life Cycle of Building Materials Act.

This law mandates that construction and demolition waste should be recycled and reused to the greatest extent possible.



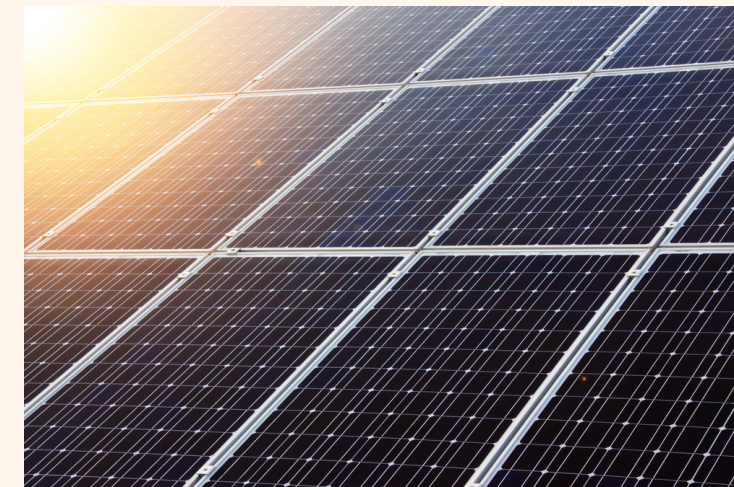
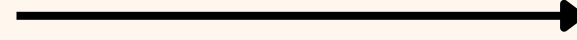
SOUTH KOREA

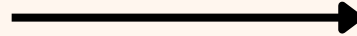
South Korea's construction and demolition waste management system is a comprehensive approach that involves government regulation, producer

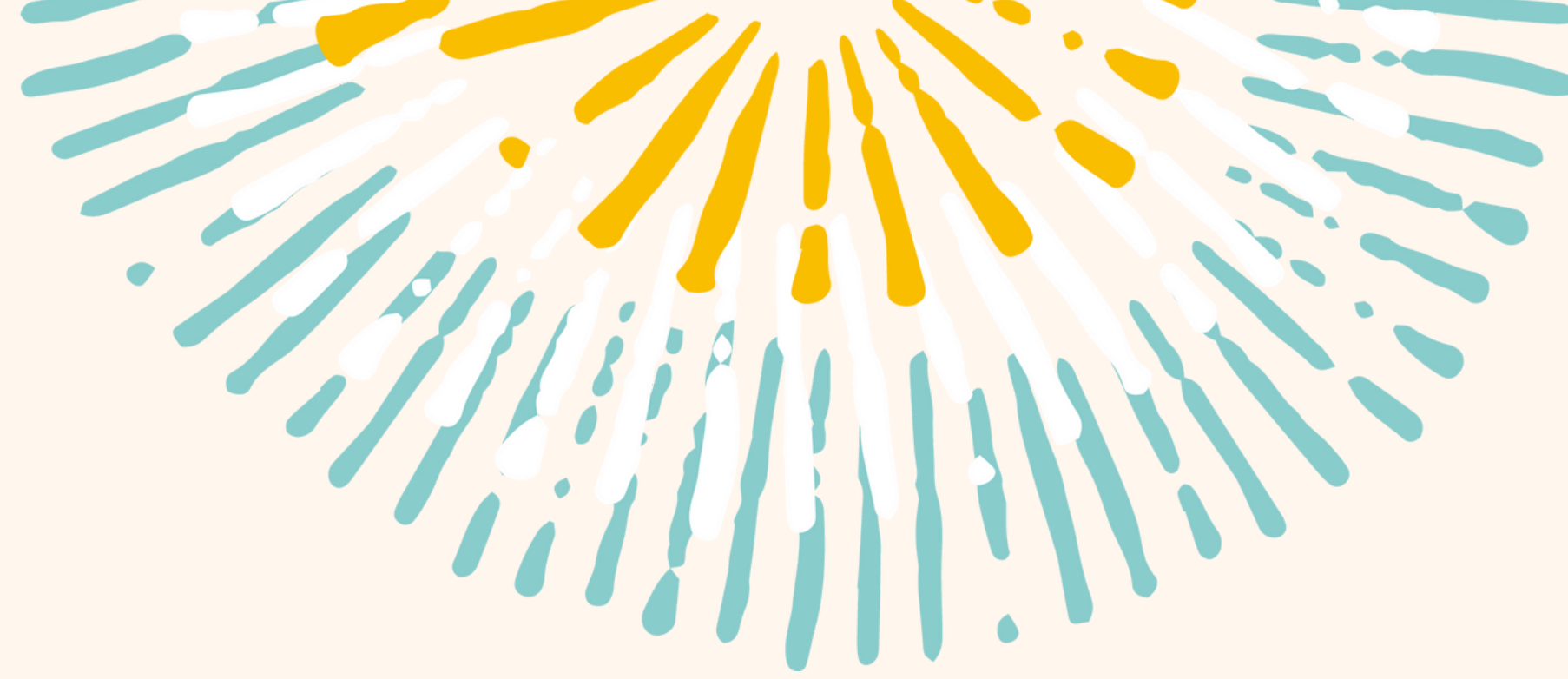
responsibility, industry innovation, and public education

AUSTRALIA

In Australia, based on its type, construction and demolition waste is divided into different categories: recycled, reused or disposed.

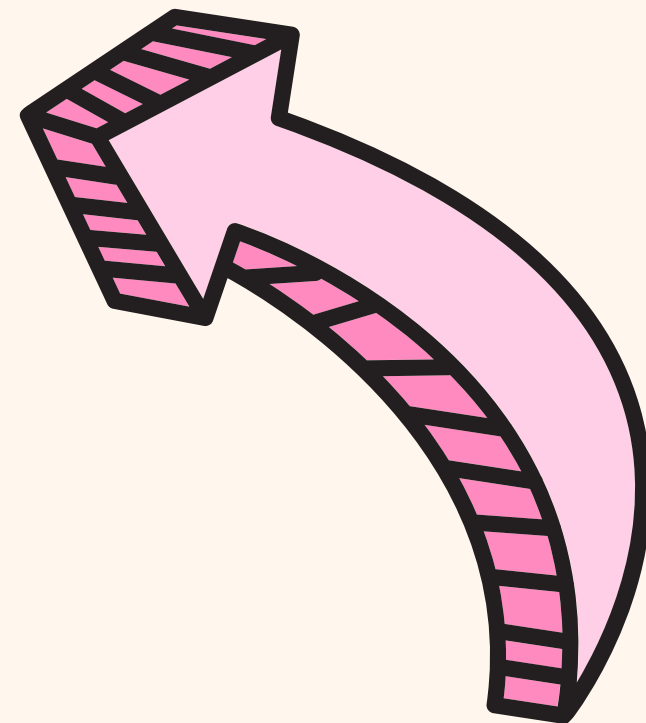
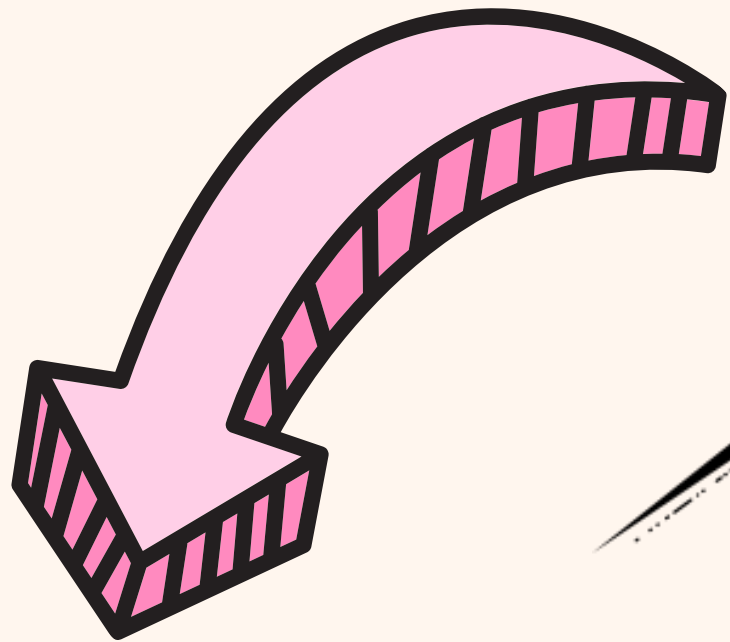




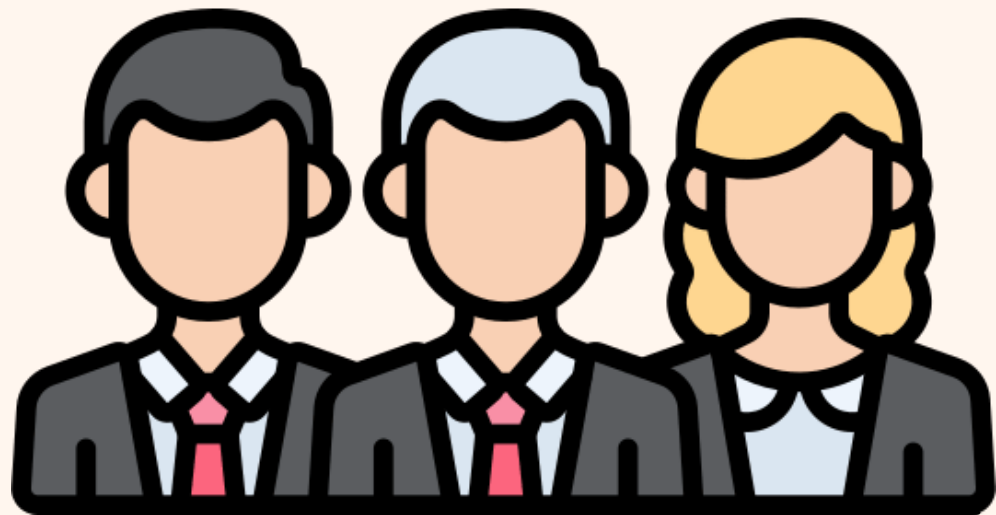
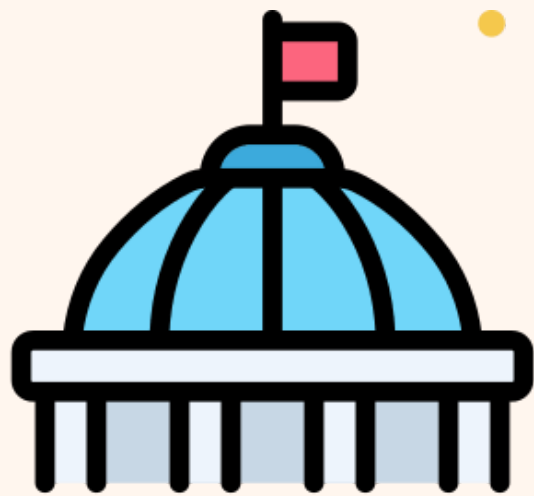


FEASIBILITY OF ASPECTS OF FOREIGN SYSTEMS OF CDW MANAGEMENT IN ARGENTINA

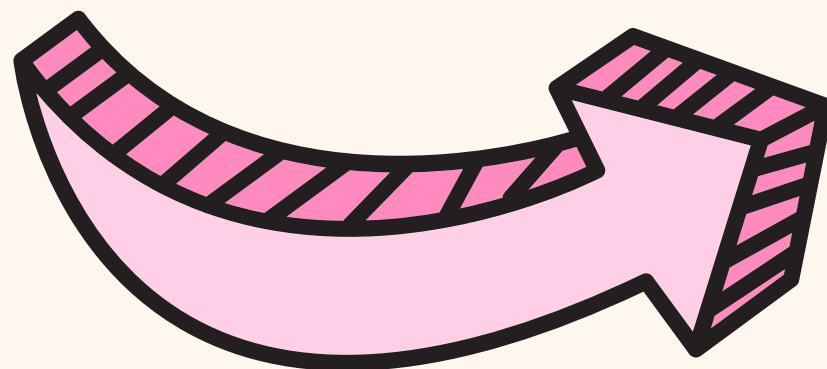




SOCIETY



GOVERNMENT



COMPANIES

THE IMPLEMENTATION OF A CDW MANAGEMENT SYSTEM

ADVANTAGES

The materials that remain as waste can be reused for different purposes:

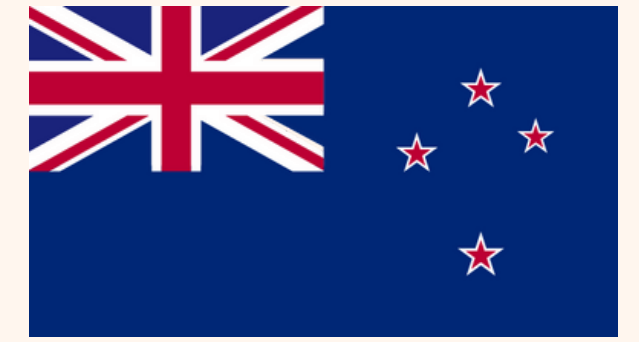
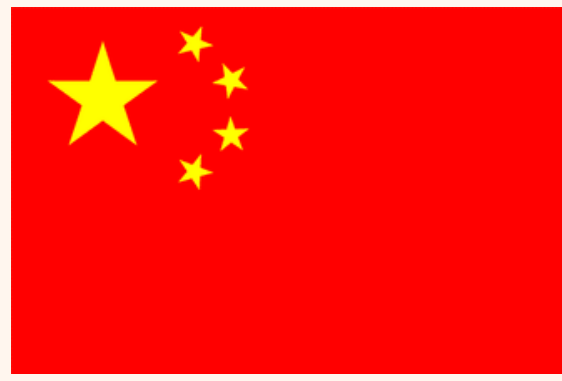
- **Masonry waste can be converted into aggregates.**
- **Combustible waste can become alternative fuel for energy recovery.**
- **Non-recyclable waste can be disposed of in municipal garbage dumps.**

The creation of new recycling plants would generate a new field of competition within the sector and, consequently, generate new jobs.

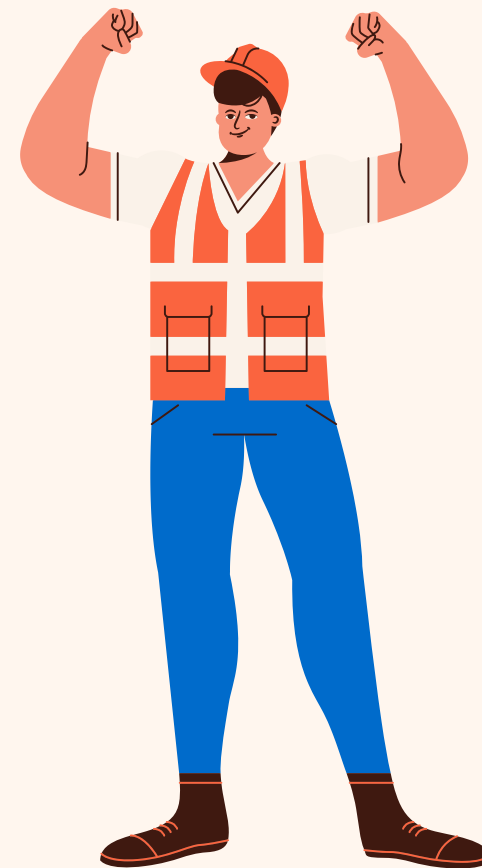
There would be less environmental pollution, less global warming and less gas emissions.

DISADVANTAGE

The transportation of waste to the plants is carried out with trucks that pollute the air with their engines. Thus, this pollution can have an unwanted negative effect on the environment.



CONCLUSION



CONCLUSION



THE PRESENT



SOCIETY
GOVERNMENT
COMPANIES



REFERENCES

1. NU. CEPAL, "The 2030 Agenda and the Sustainable Development Goals: The 17 Goals". Available: <https://sdgs.un.org/es/goals> (accessed May 18th, 2023).
2. I. T. Mercante, "Caracterización de residuos de la construcción. Aplicación de los índices de generación a la gestión ambiental". Revista Científica de UCES, vol. XI, no. 2, pp. Primavera. 2007. Accessed: July. 23, 2023. [Online]. Available: http://dspace.uces.edu.ar:8180/jspui/bitstream/123456789/152/1/Caracterizaci%C3%B3n_de_residuos.pdf
3. Connecticut, "What is Construction and Demolition Waste?". portal.ct.gov. <https://portal.ct.gov/DEEP/Waste-Management-and-Disposal/Construction-and-Demolition-Waste/What-is-CD-Waste> (accessed Sep. 1, 2023).
4. A. S. Muhammad, H. Beijia, C. Lifeng, "Review of construction and demolition waste management in China and USA ". Journal of Environmental Management , vol. 264, June 15, 2020. Accessed: September 12, 2023. [Online]. Available: <http://www.elsevier.com/locate/jenvman>
5. K.R.A Nunes, C.F. Mahler, "Comparison of construction and demolition waste management between Brazil, European Union and US". Waste Management & Research: The Journal for a Sustainable Circular Economy (WM&R), vol 8, no 1. 2020. Accessed: September 12, 2023. [Online]. Available: journals.sagepub.com/home/wmr
6. European Commission. "EU Construction & Demolition Waste Management Protocol". September, 2016. Accessed: September 12, 2023. [Online] Available: <https://sdgs.un.org/partnerships/eu-construction-demolition-waste-management-protocol-guidelines-and-business-models>
7. K. Jeonghyun. "Construction and demolition waste management in Korea: recycled aggregate and its application". July 28, 2021. [Online]. Available: <https://link.springer.com/article/10.1007/s10098-021-02177-x>
8. W. Huanyu, Z. Jian, Y. Hongping, Z. George, W. Jianyuan, "Cross-regional mobility of construction and demolition waste in Australia: An exploratory study". Resources Conservation & Recycling, vol 156, no 1. 2020. Accessed: September 12, 2023. [Online]. Available: www.elsevier.com/locate/resconrec
9. A. A. Savino and E. de Titto. (2020). Sustainable Waste Management Challenges in Argentina. [Online]. Available: https://www.academia.edu/40745781/Sustainable_Waste_Management_Challenges_in_Argentina

UTN

**NATIONAL TECHNOLOGICAL UNIVERSITY,
PARANÁ REGIONAL SCHOOL
CIVIL ENGINEERING DEPARTMENT, INGLÉS II**

2023

INEFFECTIVE WASTE MANAGEMENT IN CIVIL WORKS IN ARGENTINA: GLOBAL PERSPECTIVES ON EFFECTIVE WASTE DISPOSAL REGULATION

This work is an EFL engineering student project. The pictures and content in this presentation are only used for educational purposes. If there is any copyright conflict, they will be immediately removed.

Students: **DELFINA BERTOSSI AND MATÍAS GASTALDI**

Teacher: **GRACIELA ELIZABETH YUGDAR TÓFALO**