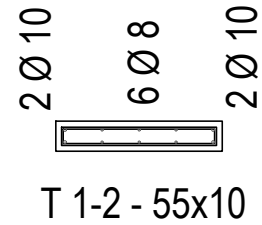
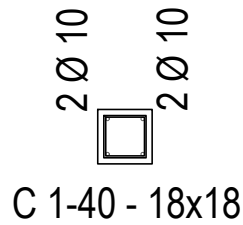
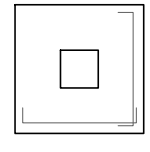
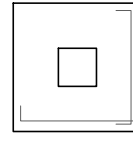
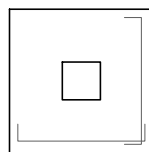
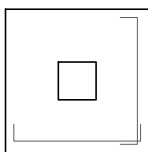
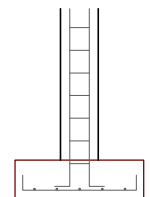
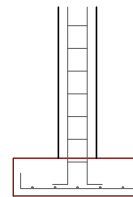
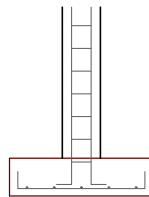
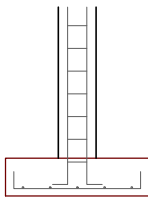
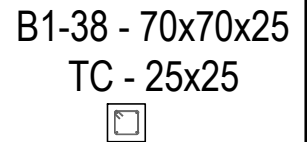
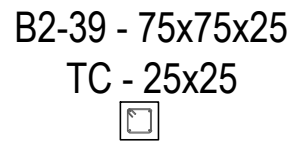
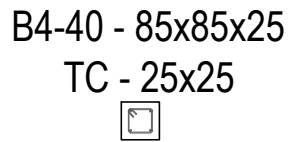
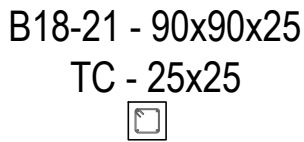


ARMADO DE COLUMNAS



ARMADO DE BASES



1 Ø 10 c/19
Lt = 90cm
5 Barras c/ lado

1 Ø 10 c/17
Lt = 85cm
5 Barras c/ lado

1 Ø 10 c/15
Lt = 75cm
5 Barras c/ lado

1 Ø 10 c/14
Lt = 70cm
5 Barras c/ lado



UNIVERSIDAD TECNOLÓGICA
NACIONAL - FRCON

PLANO
04

DETALLE DE COLUMNAS Y BASES - PN°2

CÁTEDRA: PROYECTO FINAL

DIBUJO: Yáñez Omar, Diego Emanuel

ESCALA
1:50