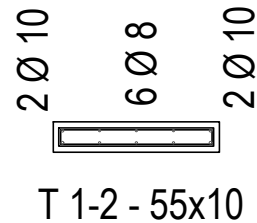
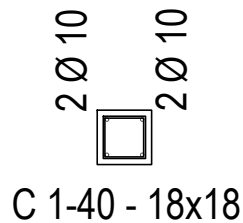


ARMADO DE COLUMNAS



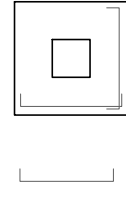
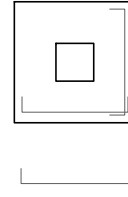
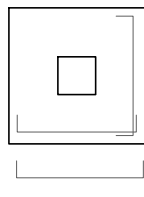
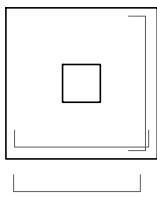
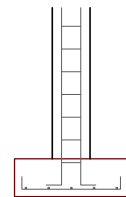
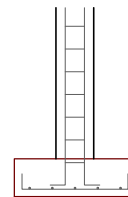
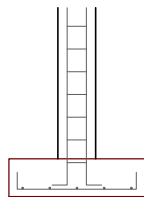
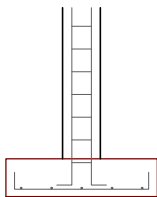
ARMADO DE BASES

B18-21 - 100x100x25
TC - 25x25

B4-40 - 90x90x25
TC - 25x25

B2-39 - 80x80x25
TC - 25x25

B1-38 - 75x75x25
TC - 25x25



1 Ø 10 c/20
Lt = 100cm
5 Barras c/ lado

1 Ø 10 c/18
Lt = 90cm
5 Barras c/ lado

1 Ø 10 c/15
Lt = 80cm
5 Barras c/ lado

1 Ø 10 c/14
Lt = 75cm
5 Barras c/ lado



UNIVERSIDAD TECNOLÓGICA
NACIONAL - FRCON

PLANO
08

DETALLE DE COLUMNAS Y BASES - PN°4

CÁTEDRA: PROYECTO FINAL

DIBUJO: Yáñez Omar, Diego Emanuel

ESCALA
1:50